

LEGNO ANTICO



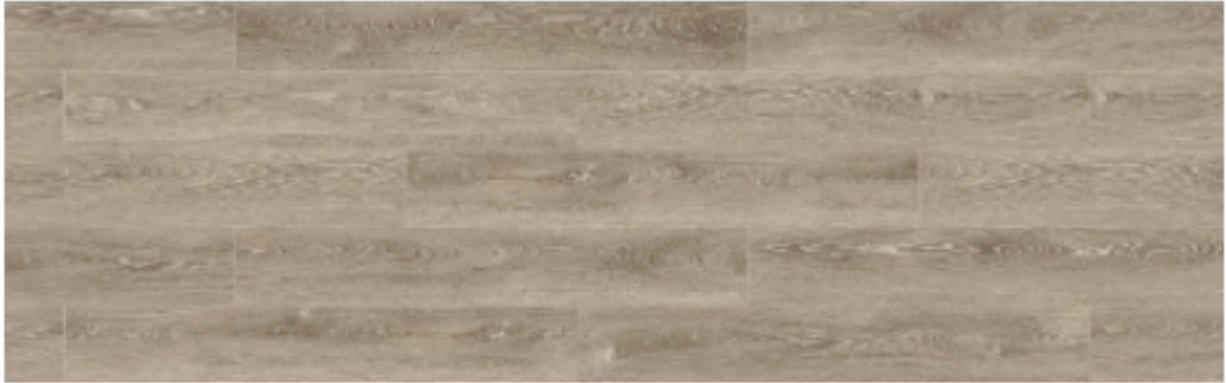
DESIGN AND DURABILITY GLUELESS QUALITY LVT

ANTICO ■ ■ ■
STONE & TILE

7.28" X 47.71" X 5 mm



Oak Creek



Oak Ranch



Boulder Hickory

LEGNO ANTICO 

ANTICO 
STONE & TILE



7.28" X 47.71" X 5 mm

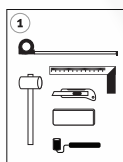


Silver Hickory

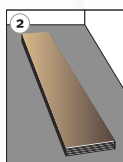


Platinum Oak

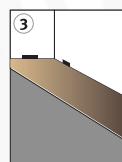
Easy & Quick Installation



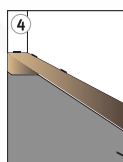
Accessories



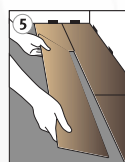
Start installation in a corner of the room, with the groove facing you, working from left to right. Leave an expansion gap of 0.5 cm all around!



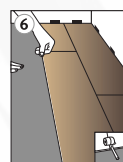
Click the vertical panels in place into each other in a straight line in the first row; pressure may be applied by hand or with hand roller.



Lay the strip flat and tilted on the floor.



Slide the panel in the previous one and join it to the left. It is advisable to use a rubber mallet and tapping block to ensure the click mechanism is firmly locked.



Click the short side of the panel vertically in the previous one by pressing it with the hand or with a hand roller.

LEGNO ANTICO



ANTICO
STONE & TILE



7.28" X 47.71" X 5 mm

TECHNICAL DATA SHEET

PRODUCT INFORMATION

| | |
|--|----------------|
| PRODUCT NAME | LEGNO ANTICO |
| Thickness (Overall thickness / Wearlayer thickness) | 5.0MM / 0.55MM |
| TOP COATING | PU |

PHYSICAL PROPERTY

| STANDARD | TEST ITEM | TEST METHOD | Requirement | Performance |
|---------------|---|-----------------------|---|----------------|
| ISO 10582 | Dimensions | ISO 24342 | Length: $\leq 0.15\%$, Width: $\leq 0.10\%$ (MAX: 0.5mm) | Meets |
| | Squareness | ISO 24342 | $\leq 400\text{mm}$: $\leq 0.25\text{mm}$ $> 400\text{mm}$: $\leq 0.35\text{mm}$ | Meets |
| | Overall thickness | ISO 24346 | $+0.13\text{mm} / -0.10\text{mm}$ | Meets |
| | Wearlayer thickness | ISO 24340 | $+13\% / -10\%$ | Meets |
| | Total mass per unit (g/m^2) | ISO 23997 | $+13\% / -10\%$ | Meets |
| | Dimensional stability | ISO 23999 | $\leq 0.5 \%$ | Meets |
| | Curling after exposure to heat | ISO 23999 | $\leq 1.0 \text{mm}$ | Meets |
| | Residual indentation (avg) | ISO 24343.1 | $\leq 0.1\text{mm}$ | Meets |
| | Effect of Castor chair | ISO 4918 | No damage After 25,000 rev | Meets |
| Other testing | Colour fastness | ISO 105 BO2:M2 | ≤ 6 | Meets |
| | Slip resistance | EN 13893 DIN 51130 | | DS R9 ~ R10 |
| | Fire behavior | EN 135011 | | Bf1-s1 |
| | SOUND REDUCTION | ISO 101403 | | 20 db |
| | Indoor Air Quality | | IAC GOLD certified | Meets |



ANTICO
STONE & TILE

2001 NW 44TH STREET
POMPANO BEACH, FL 33064
TEL 954.978.7925

www.anticostone.com